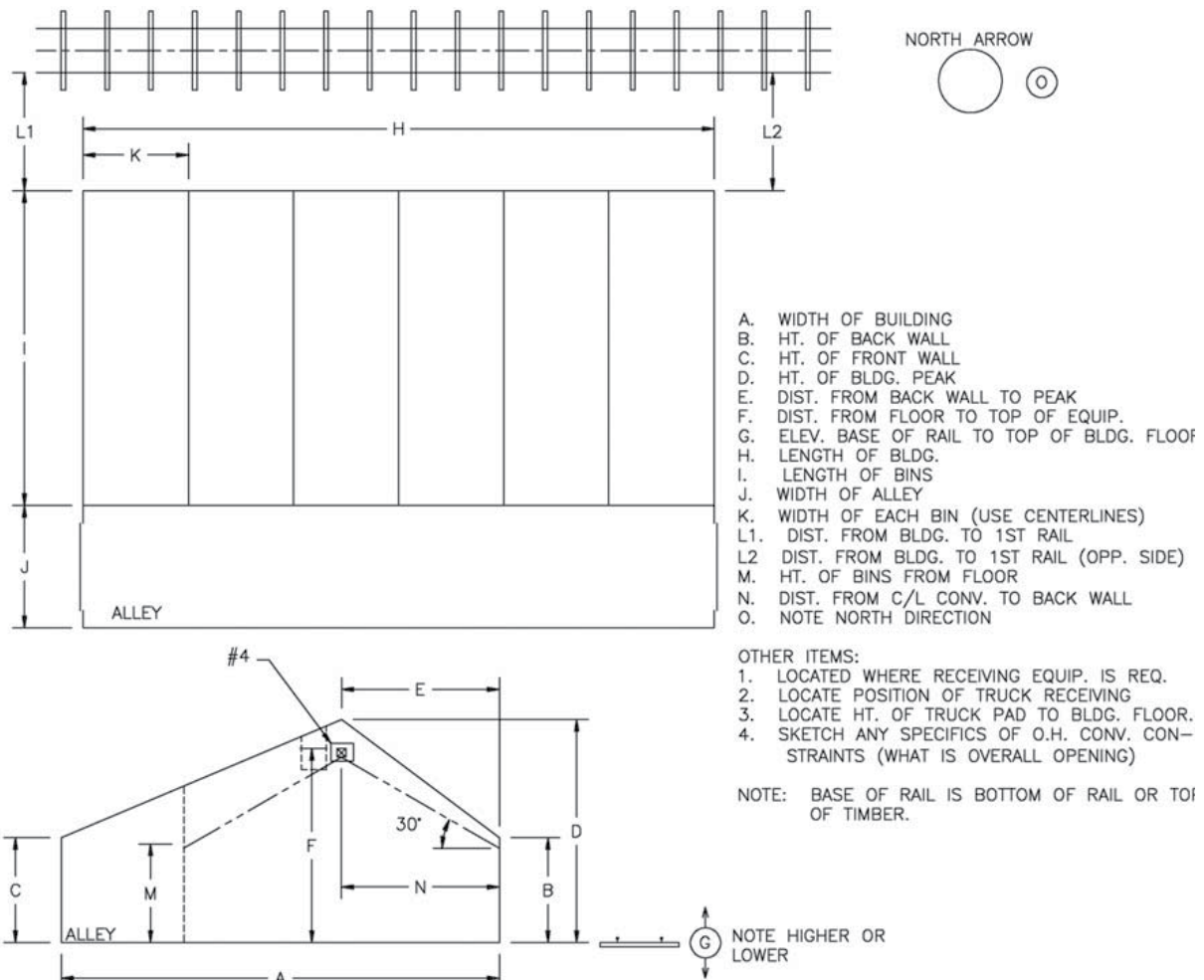


# Dry Plant Measurement Information



- OTHER ITEMS:
1. LOCATED WHERE RECEIVING EQUIP. IS REQ.
  2. LOCATE POSITION OF TRUCK RECEIVING
  3. LOCATE HT. OF TRUCK PAD TO BLDG. FLOOR.
  4. SKETCH ANY SPECIFICS OF O.H. CONV. CONSTRAINTS (WHAT IS OVERALL OPENING)

NOTE: BASE OF RAIL IS BOTTOM OF RAIL OR TOI OF TIMBER.

## DRY PLANT MEASUREMENT

Basic Formula: Pounds of Product = Cubic Feet x Product Weight

Area A: 14' x 28' x width = cubic feet x product weight

Area B: 10' x 6' = 60 square feet ÷ 2 = 30<sup>2</sup> x width = cubic feet x product weight

Area C: 18' x 6' = 108 square feet ÷ 2 = 54<sup>2</sup> x width = cubic feet x product weight

Partial Bin Measurement: 10' x 4' = 40 square feet ÷ 2 = 20<sup>2</sup> x width = cubic feet x product weight

